

Solid State Relays G3□-VD

G3H/G3HD

CSM_G3H_G3HD_DS_E_6_2

New Models with International Standards Added to G3H Series (-VD in model number). Same Profile as LY1 and LY2 Bi-power Relays

- Certified by UL, CSA, and VDE (models numbers with a suffix of "-VD").
- Socket type, same size as LY Power Relays.
- Operation indicator provided to confirm input (models numbers with "N" before the suffix).



Refer to *Safety Precautions for All Solid State Relays*.



Note: The socket is optional.

For the most recent information on models that have been certified for safety standards, refer to your OMRON website.

Model Number Structure

■ Model Number Legend

G3H-□□□□□□-□
1 2 3 4 5 6 7 8

- | | |
|---|--|
| <p>1. Basic Model Name G3H: Solid State Relay</p> <p>2. Rated Load Power Supply Voltage 2: 200 VAC</p> <p>3, 4. Rated Load Current 03: 3 A</p> <p>5. Terminal Type S: Plug-in terminals</p> | <p>6. Zero Cross Function Blank: Equipped with zero cross function L: Not equipped with zero cross function</p> <p>7. Operation Indicator Blank: Not equipped with operation indicator N: Equipped with operation indicator</p> <p>8. Certification VD: Certified by UL, CSA, and VDE standards</p> |
|---|--|

G3HD-□□□□□-□
1 2 3 4 5 6 7

- | | |
|---|---|
| <p>1. Basic Model Name G3H: Solid State Relay</p> <p>2. Load Power Supply Type D: DC</p> <p>3. Rated Load Power Supply Voltage X: 50 VDC</p> <p>4. Rated Load Current 03: 3 A</p> | <p>5. Terminal Type S: Plug-in terminals</p> <p>6. Operation Indicator Blank: Not equipped with operation indicator N: Equipped with operation indicator</p> <p>7. Certification VD: Certified by UL, CSA, VDE</p> |
|---|---|

| Isolation | Zero cross function | Indicator | Rated output load | Rated input voltage | Model |
|----------------------|---------------------|-----------|---------------------------------|---------------------|---------------|
| Photocoupler | Yes | Yes | 3 A at 100 to 240 VAC *1 | 5 to 24 VDC | G3H-203SN-VD |
| Phototriac coupler | No | | | 5 VDC | G3H-203SLN-VD |
| | | | | 12 VDC | |
| | | | | 24 VDC | |
| Photocoupler | --- | | 3 A at 4 to 48 VDC *2 | 5 to 24 VDC | G3HD-X03SN-VD |
| Photocoupler | Yes | No | 3 A at 100 to 240 VAC *1 | 4 to 24 VDC | G3H-203S-VD |
| Phototriac coupler | No | | | 5 VDC | G3H-203SL-VD |
| | | | | 12 VDC | |
| | | | | 24 VDC | |
| Photocoupler | --- | | 3 A at 4 to 48 VDC *2 | 4 to 24 VDC | G3HD-X03S-VD |
| Photovoltaic coupler | --- | Yes | 2.5 A at 24 to 240 VDC *3 *4 | 12 to 24 VDC | G3HD-202SN-VD |

***4** Application is possible for a half-wave rectification load between 19.2 and 264 VAC.

Connecting Sockets/Hold-Down Clips

| | Front-mounting Sockets | Back-mounting Sockets | | |
|-----------------------|------------------------|-----------------------|--------|----------------|
| Socket | PTF08A(-E) | PT08 | PT08-0 | PT08QN |
| Hold-down Clip | PYC-A1 | PYC-P PYC-S | PYC-P | PYC-P PYC-S |

Specifications

■ Ratings (at an Ambient Temperature of 25°C)

Input

| Model | Rated voltage | Operating voltage | Impedance | Voltage level | |
|---------------|---------------|-------------------|---|----------------------|----------------------|
| | | | | Must operate voltage | Must release voltage |
| G3H-203SN-VD | 5 to 24 VDC | 4 to 28 VDC | 15 mA max. (See note 2.) | 4 VDC max. | 1 VDC min. |
| G3H-203SLN-VD | 5 VDC | 4 to 6 VDC | 390 $\Omega \pm 20\%$ | 4 VDC max. | 1 VDC min. |
| | 12 VDC | 9.6 to 14.4 VDC | 900 $\Omega \pm 20\%$ | 9.6 VDC max. | |
| | 24 VDC | 19.2 to 28.8 VDC | 2 k $\Omega \pm 20\%$ | 19.2 VDC max. | |
| G3HD-X03SN-VD | 5 to 24 VDC | 4 to 28 VDC | 1.5 k Ω $^{+20\%}_{-10\%}$ (See note 1.) | 4 VDC max. | 1 VDC min. |
| G3H-203S-VD | 4 to 24 VDC | 3 to 28 VDC | 15 mA max. (See note 2.) | 3 VDC max. | 1 VDC min. |
| G3H-203SL-VD | 5 VDC | 4 to 6 VDC | 390 $\Omega \pm 20\%$ | 4 VDC max. | 1 VDC min. |
| | 12 VDC | 9.6 to 14.4 VDC | 900 $\Omega \pm 20\%$ | 9.6 VDC max. | |
| | 24 VDC | 19.2 to 28.8 VDC | 2 k $\Omega \pm 20\%$ | 19.2 VDC max. | |
| G3HD-X03S-VD | 4 to 24 VDC | 3 to 28 VDC | 1.5 k Ω $^{+20\%}_{-10\%}$ (See note 1.) | 3 VDC max. | 1 VDC min. |
| G3HD-202SN-VD | 12 to 24 VDC | 9.6 to 28.8 VDC | 25 mA max. (at 24 VDC) (See note 2.) | 9.6 VDC max. | 1 VDC min. |

Note: 1. The input impedance is given for the maximum operating voltage. For details, refer to the *Technical Guide for Solid State Relays*.
2. With constant current input system.

Output

| Model | Applicable load | | | |
|--|--------------------|--------------------|------------------------|---------------------|
| | Rated load voltage | Load voltage range | Load current | Inrush current |
| G3H-203SN-VD G3H-203S-VD G3H-203SLN-VD G3H-203SL-VD | 100 to 240 VAC | 75 to 264 VAC | 0.1 to 3 A at 40°C | 45 A 60 Hz, 1 cycle |
| G3HD-X03SN-VD G3HD-X03S-VD | 4 to 48 VDC | 3 to 52.8 VDC | 0.1 to 3 A at 40°C | 18 A (10 ms) |
| G3HD-202SN-VD | 24 to 240 VDC | 19.2 to 264 VDC | 0.001 to 2.5 A at 40°C | 20 A (10 ms) |

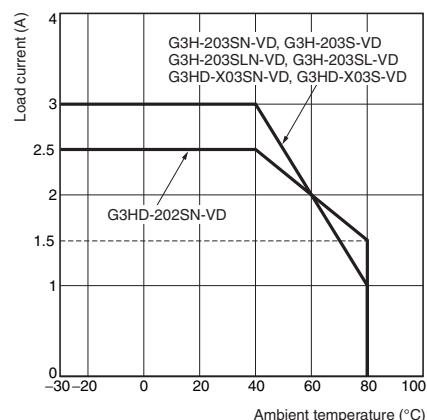
Characteristics

| Model | G3H-203SN-VD/203S-VD | G3H-203SLN-VD/203SL-VD | G3HD-X03SN-VD/X03S-VD | G3HD-202SN-VD |
|------------------------|---|---|-------------------------------|--|
| Operate time | 1/2 cycle of load power source + 1 ms max. | 1 ms max. | 0.5 ms max. | 5 ms max. |
| Release time | 1/2 cycle of load power source + 1 ms max. | | 2 ms max. | 10 ms max. |
| Output ON voltage drop | 1.6 V (RMS) max. | | | 3 V max. (output ON-resistance: 1.25 Ω max.) |
| Leakage current | 5 mA max. (at 100 VAC); 10 mA max. (at 200 VAC) | 2.5 mA max. (at 100 VAC); 5 mA max. (at 200 VAC) | 5 mA max. (at 50 VDC) | 0.1 mA max. (at 200 VDC) |
| Insulation resistance | 100 MΩ min. (at 500 VDC) | | | |
| Dielectric strength | 2,000 VAC, 50/60 Hz for 1 min | | 1,500 VAC, 50/60 Hz for 1 min | |
| Vibration resistance | Destruction: 10 to 55 to 10 Hz, 0.75-mm single amplitude | | | |
| Shock resistance | Destruction: 1,000 m/s ² | | | |
| Ambient temperature | Operating: −30°C to 80°C (with no icing) Storage: −30°C to 100°C (with no icing) | | | |
| Ambient humidity | 45% to 85% | | | |
| Certified standards | G3H: UL508, CSA C22.2 No. 14, EN60947-4-3 G3HD: UL508, CSA C22.2 No. 14, EN60950-1 | | | |
| EMC | Emission: EN55011 Group 1 Class B Immunity: EN61000-6-2 | | | |
| Weight | Approx. 50 g | | | |

Engineering Data

Load Current vs. Ambient Temperature Characteristics

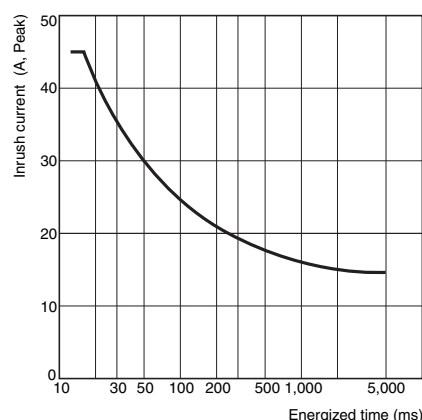
G3H-203SN-VD/203S-VD/203SLN-VD/
203SL-VD
G3HD-X03SN-VD/X03S-VD
G3HD-202SN-VD



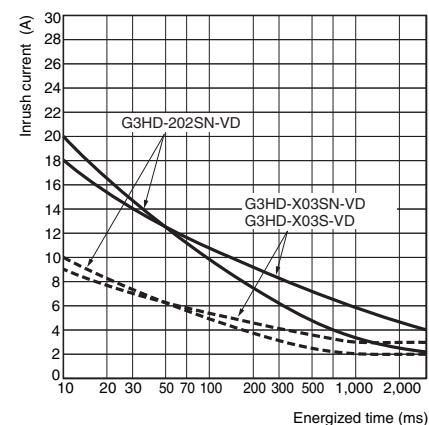
One Cycle Surge Current: Non-repetitive

Non-repetitive (Keep the inrush current to half the rated value if it occurs repetitively.)

G3H-203SN-VD/203S-VD/203SLN-VD/
G3H-203SL-VD

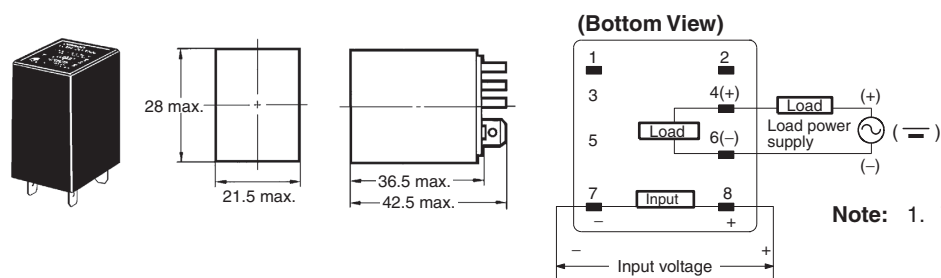


G3HD-X03SN-VD/X03S-VD
G3HD-202SN-VD



Dimensions

Note: All units are in millimeters unless otherwise indicated.



Safety Precautions

■ Precautions for Correct Use

Please observe the following precautions to prevent failure to operate, malfunction, or undesirable effect on product performance.

Connection

The SSR for DC switching use can connect to a load regardless of the polarity of the positive and negative output terminals.

Close Mounting of Multiple Relays

If multiple Relays are mounted side by side, be aware that the outer wall of each SSR works as a heat sink.

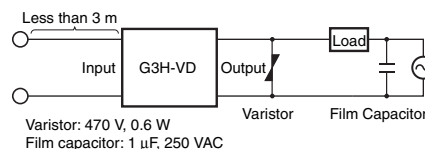
The SSR casing serves to dissipate heat. Install the Relays so that they are adequately ventilated. If poor ventilation is unavoidable, reduce the load current by half.

Protective Terminal

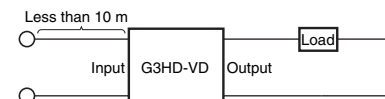
No overvoltage absorption element is built in. (The G3HD-202SN has a built-in varistor.) Be sure to connect an overvoltage absorption element when using the G3H or G3HD with an inductive load.

EMC Directive Compliance

1. AC-switching models comply with EMC Directives under the following conditions ("VD" models only).



- Connect a varistor between the output terminals.
 - Connect a film capacitor to the load power supply.
 - The input cable must be less than 3 m.
2. DC-switching models comply with EMC Directives under the following conditions ("VD" models only).



- The input cable must be less than 10 m.

ALL DIMENSIONS SHOWN ARE IN MILLIMETERS.

To convert millimeters into inches, multiply by 0.03937. To convert grams into ounces, multiply by 0.03527.

In the interest of product improvement, specifications are subject to change without notice.

Terms and Conditions Agreement

Read and understand this catalog.

Please read and understand this catalog before purchasing the products. Please consult your OMRON representative if you have any questions or comments.

Warranties.

(a) Exclusive Warranty. Omron's exclusive warranty is that the Products will be free from defects in materials and workmanship for a period of twelve months from the date of sale by Omron (or such other period expressed in writing by Omron). Omron disclaims all other warranties, express or implied.

(b) Limitations. OMRON MAKES NO WARRANTY OR REPRESENTATION, EXPRESS OR IMPLIED, ABOUT NON-INFRINGEMENT, MERCHANTABILITY OR FITNESS FOR A PARTICULAR PURPOSE OF THE PRODUCTS. BUYER ACKNOWLEDGES THAT IT ALONE HAS DETERMINED THAT THE PRODUCTS WILL SUITABLY MEET THE REQUIREMENTS OF THEIR INTENDED USE.

Omron further disclaims all warranties and responsibility of any type for claims or expenses based on infringement by the Products or otherwise of any intellectual property right. (c) Buyer Remedy. Omron's sole obligation hereunder shall be, at Omron's election, to (i) replace (in the form originally shipped with Buyer responsible for labor charges for removal or replacement thereof) the non-complying Product, (ii) repair the non-complying Product, or (iii) repay or credit Buyer an amount equal to the purchase price of the non-complying Product; provided that in no event shall Omron be responsible for warranty, repair, indemnity or any other claims or expenses regarding the Products unless Omron's analysis confirms that the Products were properly handled, stored, installed and maintained and not subject to contamination, abuse, misuse or inappropriate modification. Return of any Products by Buyer must be approved in writing by Omron before shipment. Omron Companies shall not be liable for the suitability or unsuitability or the results from the use of Products in combination with any electrical or electronic components, circuits, system assemblies or any other materials or substances or environments. Any advice, recommendations or information given orally or in writing, are not to be construed as an amendment or addition to the above warranty.

See <http://www.omron.com/global/> or contact your Omron representative for published information.

Limitation on Liability; Etc.

OMRON COMPANIES SHALL NOT BE LIABLE FOR SPECIAL, INDIRECT, INCIDENTAL, OR CONSEQUENTIAL DAMAGES, LOSS OF PROFITS OR PRODUCTION OR COMMERCIAL LOSS IN ANY WAY CONNECTED WITH THE PRODUCTS, WHETHER SUCH CLAIM IS BASED IN CONTRACT, WARRANTY, NEGLIGENCE OR STRICT LIABILITY.

Further, in no event shall liability of Omron Companies exceed the individual price of the Product on which liability is asserted.

Suitability of Use.

Omron Companies shall not be responsible for conformity with any standards, codes or regulations which apply to the combination of the Product in the Buyer's application or use of the Product. At Buyer's request, Omron will provide applicable third party certification documents identifying ratings and limitations of use which apply to the Product. This information by itself is not sufficient for a complete determination of the suitability of the Product in combination with the end product, machine, system, or other application or use. Buyer shall be solely responsible for determining appropriateness of the particular Product with respect to Buyer's application, product or system. Buyer shall take application responsibility in all cases.

NEVER USE THE PRODUCT FOR AN APPLICATION INVOLVING SERIOUS RISK TO LIFE OR PROPERTY OR IN LARGE QUANTITIES WITHOUT ENSURING THAT THE SYSTEM AS A WHOLE HAS BEEN DESIGNED TO ADDRESS THE RISKS, AND THAT THE OMRON PRODUCT(S) IS PROPERLY RATED AND INSTALLED FOR THE INTENDED USE WITHIN THE OVERALL EQUIPMENT OR SYSTEM.

Programmable Products.

Omron Companies shall not be responsible for the user's programming of a programmable Product, or any consequence thereof.

Performance Data.

Data presented in Omron Company websites, catalogs and other materials is provided as a guide for the user in determining suitability and does not constitute a warranty. It may represent the result of Omron's test conditions, and the user must correlate it to actual application requirements. Actual performance is subject to the Omron's Warranty and Limitations of Liability.

Change in Specifications.

Product specifications and accessories may be changed at any time based on improvements and other reasons. It is our practice to change part numbers when published ratings or features are changed, or when significant construction changes are made. However, some specifications of the Product may be changed without any notice. When in doubt, special part numbers may be assigned to fix or establish key specifications for your application. Please consult with your Omron's representative at any time to confirm actual specifications of purchased Product.

Errors and Omissions.

Information presented by Omron Companies has been checked and is believed to be accurate; however, no responsibility is assumed for clerical, typographical or proofreading errors or omissions.

Mouser Electronics

Authorized Distributor

Click to View Pricing, Inventory, Delivery & Lifecycle Information:

Omron:

[G3H-203S-DC3-28](#) [G3H-203SLN DC24](#) [G3H-203SN DC5-24](#) [G3HD-X03S-DC3-28](#) [G3H-DX03SNDC5-24](#) [G3HD-202SN DC12-24V](#) [G3HD-X03SN-VD DC5-24](#) [G3HD-X03SN DC5-24](#) [G3H-203S-VD DC4-24](#) [G3HD-202SN-VD DC12-24V](#) [G3H-203SLN-VD DC24](#)